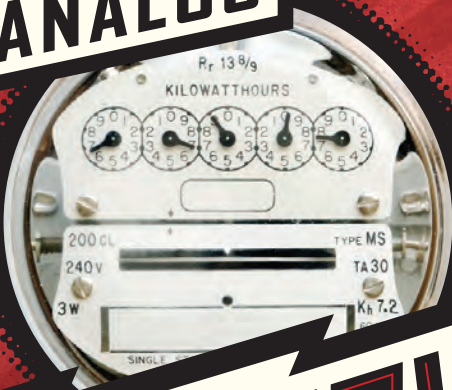
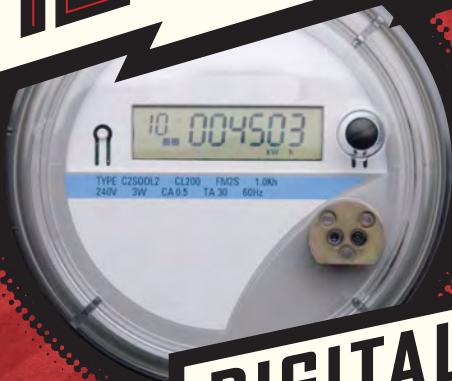


ANALOG



**KNOW
YOUR
METER**



DIGITAL

ANALOG

- ★ Analog meters feature five dials.
- ★ Odd numbered dials are read counter-clockwise; even numbers are read clockwise.
- ★ They are read once a month by a utility employee who must come onto your property.



There are two types of electric meter: analog and digital. They both measure usage in kilowatt-hours, the amount of energy required to provide 1,000 watts of power for a period of one hour. Check your meter daily or weekly to keep track of your usage, especially during extremely hot or cold weather, to prevent "surprise" high bills.

DIGITAL

- ★ Digital meters display your usage much like a digital clock displays the time.
- ★ They are highly accurate and read remotely via a secure, remote radio transmission.
- ★ Digital meters are difficult to vandalize and reduce energy theft.

