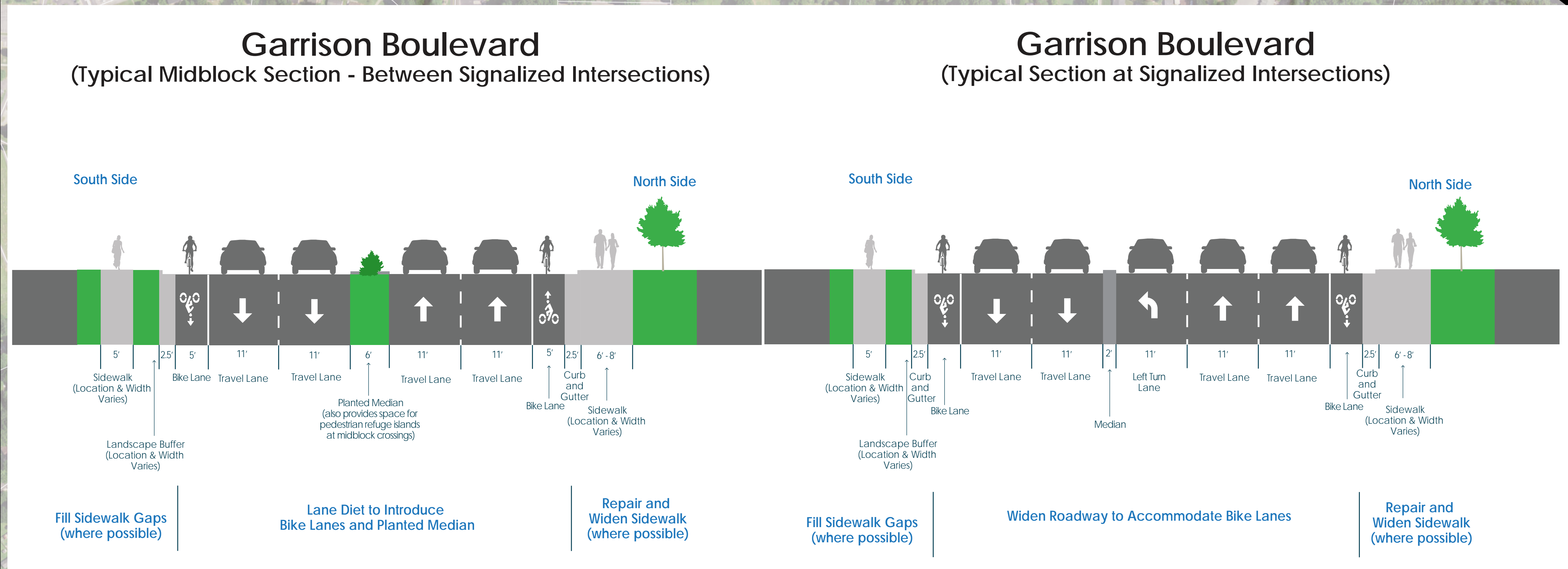
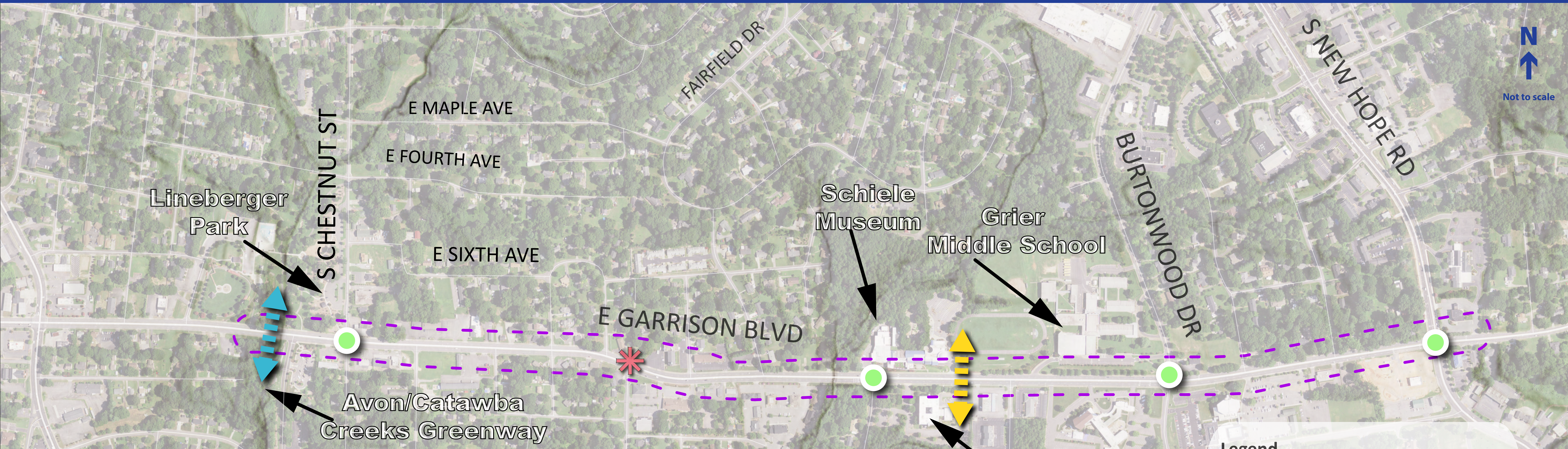


Garrison LEARNS Corridor

(Library, Education, Arts, Recreation, Nature, Science)

Benefit Facilities



Legend

- Improve Pedestrian & Bicycle Conditions, Calm Traffic & Improve Driver Safety, New Landscaping
- Improve Existing Pedestrian Crossings at Traffic Signal
- ✱ New Signal & Crossings at Laurel Ln.
- ⇄ Improve the Avon/Catawba Creeks Greenway Underpass
- ⇄ Install New Pedestrian Bridge

- Full Extent of Garrison Blvd Corridor:**
- 5' Bicycle Lanes with Crossing Treatments at Intersections
 - Lane Diet (*Narrowing from 12' to 11'*)
 - Speed Limit Reduction (*45 mph to 35 mph*)
 - Landscaped Medians and Planting Strip (*Access Management, Safety, & Aesthetic Improvement*)
 - Improved Lighting
 - Mill and Resurface
 - Repair and Widen Existing North-Side Sidewalk
 - Fill Sidewalk Gaps on South Side
- At Existing Intersections:**
- New ADA Curb Ramps
 - High-Visibility Crosswalks
 - Pedestrian Countdown Timers
 - Signal Mast Arms
 - Improved Signal Timing
- Other Key Improvements:**
- Improved Greenway Underpass (*currently impassable*)
 - New Signal and Crossings at Laurel Lane
 - Pedestrian Bridge Connecting Middle School and Schiele Museum to Library